

Workday Live

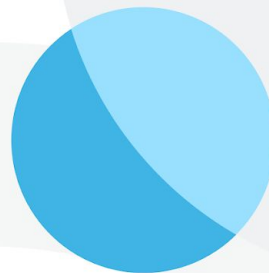
at Workday Elevate

London
133 Houndsditch,
Liverpool Street,

24 May 2023



The next evolution of finance



Safe Harbor Statement

This presentation may contain forward-looking statements for which there are risks, uncertainties, and assumptions. Forward-looking statements may include any statements regarding strategies or plans for future operations; any statements concerning new features, enhancements or upgrades to our existing applications or plans for future applications; any projections of revenues, gross margins, earnings, or other financial items; and any statements of expectation or belief. Forward-looking statements are based only on currently available information and our current beliefs, expectations, and assumptions regarding the future of our business, future plans and strategies, projections, anticipated events and trends, the economy, and other future conditions. Because forward-looking statements relate to the future, they are subject to inherent uncertainties, risks, and changes in circumstances that are difficult to predict and many of which are outside of our control. Our actual results and financial condition may differ materially from those indicated in the forward-looking statements, and therefore you should not rely on any forward-looking statements that we may make. Further information on risks that could affect Workday's results is included in our filings with the Securities and Exchange Commission which are available on the Workday investor relations webpage: www.workday.com/company/investor_relations.php

Workday assumes no obligation for, and does not intend to update, any forward-looking statements. Any unreleased services, features, functionality or enhancements referenced in any Workday document, roadmap, blog, our website, press release or public statement that are not currently available are subject to change at Workday's discretion and may not be delivered as planned or at all.

Customers who purchase Workday services should make their purchase decisions based upon services, features, and functions that are currently available.



David Adams
Financials Lead,
Workday



Marion Carr
Senior Product Marketing
Manager, Workday



Brian Montgomery
Senior Director,
Finance, Workday



Navigating the Changing World



New Ways
of Working



Economic
Uncertainties



Industry
Disruption



Workday Financials Innovation spotlight

Empower the Office of the CFO



Interoperate for Industry Depth



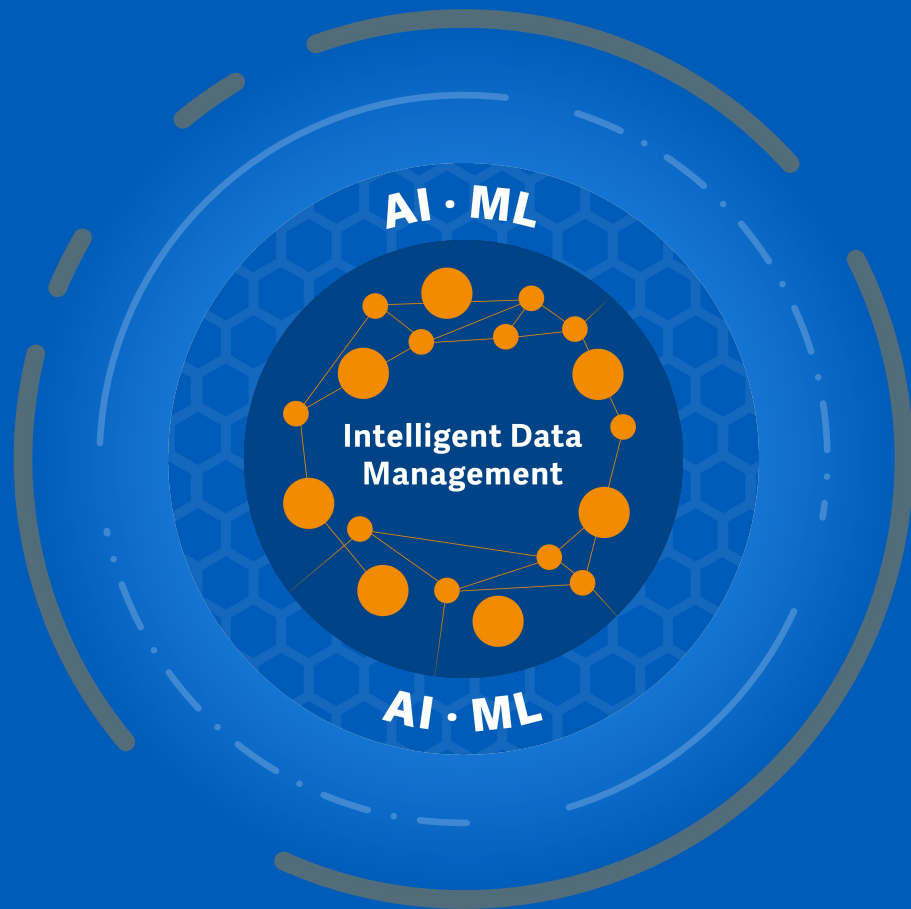
Enable Organizational Agility



Deliver Trusted Business Insights



Create Intelligent Business
Processes



Augment Decisions

Not replacing humans

Competitive Edge

Help our customers stay ahead

Deliver ML Rapidly

Faster value to our customers

How the CFO Benefits from AI and ML in Workday



Eliminate Inefficiencies

Interrogate high-volume transactions faster



Save Time

Intelligently automate manual and repetitive tasks



Manage Risk

Continuously detect patterns and anomalies surfacing areas of concern



Predict Outcomes

Optimize business processes and accelerate data-driven decision-making and forecasts

Intelligent Business Processes

workday®

AI · ML

Intelligent Data
Management

AI · ML



Enterprise
Planning



Financial
Management



Analytics and
Composite Apps



Spend
Management

Delivered :

- **Journal Insights**
 - Supplier Invoice Scanning
 - Receipt Scanning for Expenses
 - Plan Anomaly Detection
 - Outlier Reporting
 - Spend Category Recommendations
 - Supplier Invoice Worktag Recommendations
- **Customer Payment Matching**
 - Expense Protect
 - Anomaly Detection and Outlier Reporting



Journal Insights

01A
101



Impacted Debit Amount 211,474.71 USD

Impacted Credit Amount 190,919.57 USD

Anomaly Count 129

Filters

Reporting Currency USD Company FinCore Company Hierarchy Ledger Account Corporate: All Accounts Period 2022 - Dec Time Period Last 36 Periods

Priority All

Priority 7 items



Ledger Account	Impacted Debit Amount	Impacted Credit Amount	Anomaly Count	
1000:Cash	4,327.06	1,492.00	16	View 16 Journal Lines
2000:Accounts Payable	3,388.00	54,877.30	15	View 15 Journal Lines
7900:Other Expenses	70,630.80	37.58	8	View 8 Journal Lines
1910:Interworktag Receivable	400.00	1,900.00	3	View 3 Journal Lines
7200:Utilities	200.00	1,900.00	2	View 2 Journal Lines
2910:Interworktag Payable	0.00	200.00	1	View 1 Journal Line
4000:Revenue	0.00	100.00	1	View 1 Journal Line

LexCom ... Customer

Customer ID C-0039

Address 30 Rockefeller Center
New York, NY 10020
United States of America

Navigate Customer Hierarchy

Approval Status Approved

Total Balance 9,783.65

[Overview](#) [Addresses and Contacts](#) [Contracts](#) [Invoices and Payments](#) [Assigned Roles](#) [Custom Reports](#)[Aging](#) [Invoices](#) [Recent Invoice Notes](#) [Payments](#) [Deposits](#) [Related Reports](#)

Record Payment

Apply Payment

Write Off Bad Debt

Recent Payments 4 of 9 items



Customer Payment	Transaction ID	Payment Date	Customer	Payment Status	Application Status	On Account Amount	Overpayment Amount	Payment Amount	Currency	Payment Type	Payment Reference	Company
Q	Customer Payment - 82	01/31/2021	LexCom	In Progress	Unapplied	0.00	0.00	2,000.00	USD	Check	Missing remittance	500.3 Green Planet Solutions, Inc. (USA)
Q	Customer Payment - 81	01/31/2021	LexCom	In Progress	Applied with On Account	1,500.00	0.00	1,500.00	EUR	Check		500.3 Green Planet Solutions, Inc. (USA)
Q	Customer Payment - 80	01/31/2021	LexCom	In Progress	Applied with On Account	1,000.00	0.00	1,000.00	USD	Check		500.3 Green Planet Solutions, Inc. (USA)
Q	Customer Payment - 83	12/31/2020	LexCom	In Progress	Unapplied	0.00	0.00	3,500.00	EUR	Check		500.3 Green Planet Solutions, Inc. (USA)

Intelligent Business Processes

workday®

AI · ML

Intelligent Data
Management

AI · ML



Enterprise
Planning



Financial
Management



Analytics and
Composite Apps



Spend
Management

Future:

- Contract Metadata Extraction
- Auto-Skip Approvals
- Self-Reconciling Accounts
- Supplier Invoice Automation - Scanning & 2-Way Matching
- Flux Analysis
- Contract Document Clause Detection
- Document Type Validation for Emailed Expense Receipt
- Generic Worktag Validation (Addl Fields)
- Personalized Catalog Search
- Expense Item Recommendations & Defaulting
- AR - Overpayment Reason Recommendations, Overpayment Worktag Recommendations, Write-offs Recommendations

Controller Hub

Overview

Period Close Status and Performance

Data Management Process Orchestration

Close Orchestration

Anomaly Review and Correction

Account Reconciliation

Variance Analysis

Reporting

Consolidated Income Statement

Consolidated Trial Balance

Cash Flow Statements

Build Financial Statement

Disclosure Management

Suggested Links

Overview

KPIs

Period End Close Status



[View More](#)

Speed of Close

↑ 10% faster than previous quarter

[View More](#)

Accuracy

↑ 30% more accurate due to less manual entry

[View More](#)

Automation

↑ 38% of tasks automated
Measurement: Number of tasks run via Workday automation

[View More](#)

Variance Analysis

\$20,569 Actuals versus Budget
Account: Supplier (AP)
Variance: 50.54%
ALERT

[View More](#)

Trended Close Month-to-Month



Where can you learn more?

Your CSM

What's right for
your company right
now?



The Community

Videos,
Enablement
guides, Factsheets
FAQs and more



Roadmap

ML and Financial
product roadmaps
available on the
Community





Finance Innovation at Workday

Q&A

The background of the slide is a solid orange color. On the right side, there are three large, overlapping circles in shades of orange and yellow, creating a modern, abstract design.



Thank you

