

Workday Live

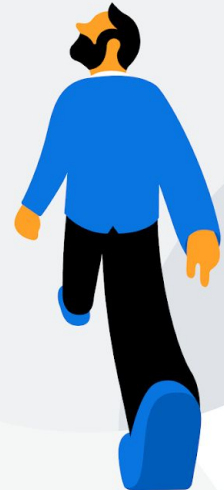
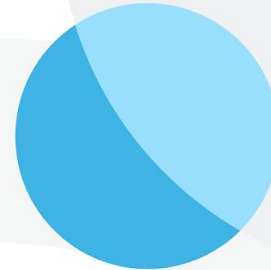
at Workday Elevate

London
133 Houndsditch,
Liverpool Street,

24 May 2023



Workday Accounting Centre setting a new standard for agility, efficiency and insight



Safe Harbor Statement

This presentation may contain forward-looking statements for which there are risks, uncertainties, and assumptions. If the risks materialize or assumptions prove incorrect, Workday's business results and directions could differ materially from results implied by the forward-looking statements. Forward-looking statements include any statements regarding strategies or plans for future operations; any statements concerning new features, enhancements or upgrades to our existing applications or plans for future applications; and any statements of belief. Further information on risks that could affect Workday's results is included in our filings with the Securities and Exchange Commission which are available on the Workday investor relations webpage: www.workday.com/company/investor_relations.php

Workday assumes no obligation for and does not intend to update any forward-looking statements. Any unreleased services, features, functionality or enhancements referenced in any Workday document, roadmap, blog, our website, press release or public statement that are not currently available are subject to change at Workday's discretion and may not be delivered as planned or at all.

Customers who purchase Workday, Inc. services should make their purchase decisions upon services, features, and functions that are currently available.



David Horne

Regional Sales Director

Workday



James Wilkinson

Head of Finance Technology & Change

NFU Mutual



Aqueel Alvi

Principal Customer Success Manager

Workday



Alistair Adams

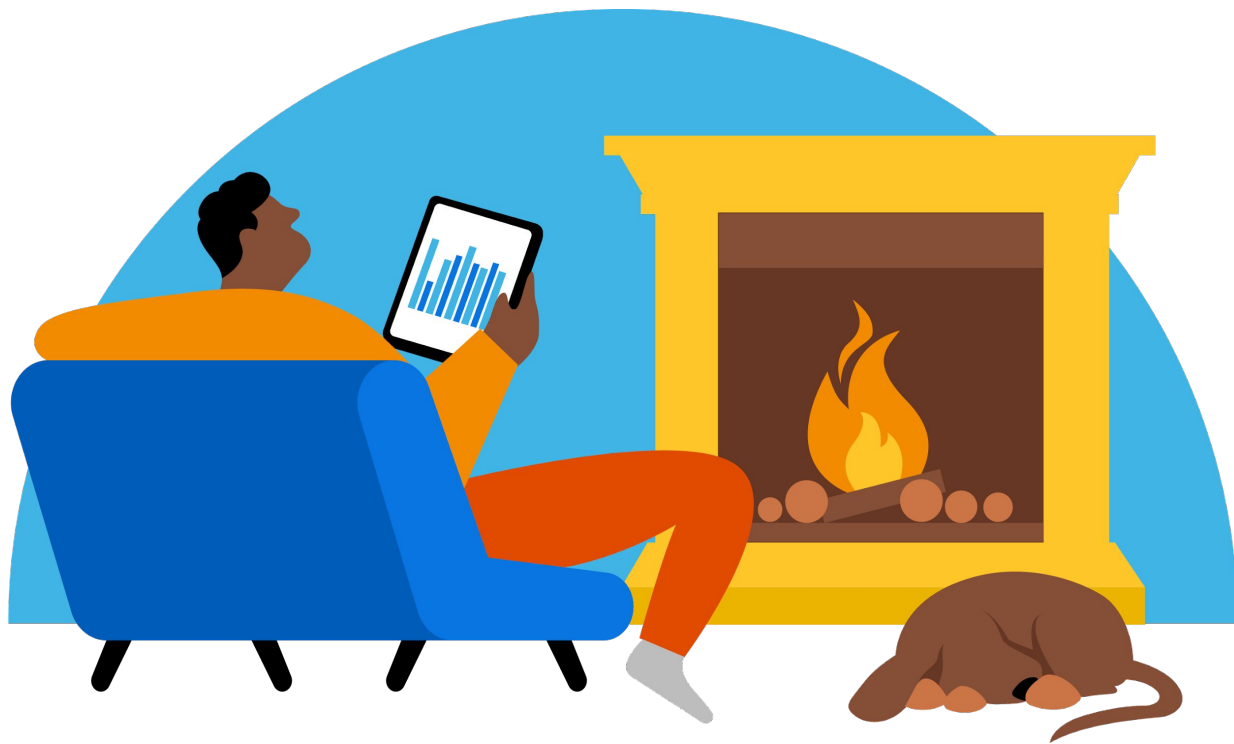
Solution Consultant

Workday



Agenda

- Introductions
- Conversation with James Wilkinson, Head of Finance Technology & Change at NFU Mutual
- Product Demonstration
- Q&A

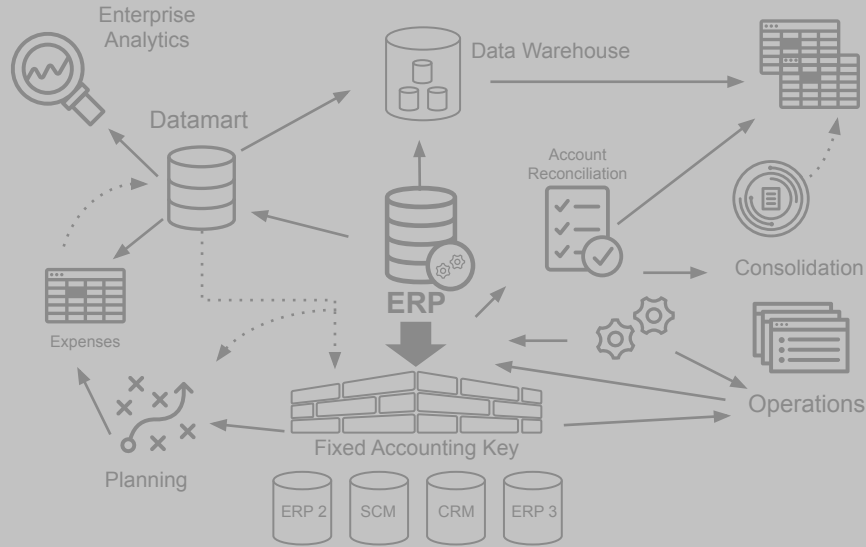




DEMO

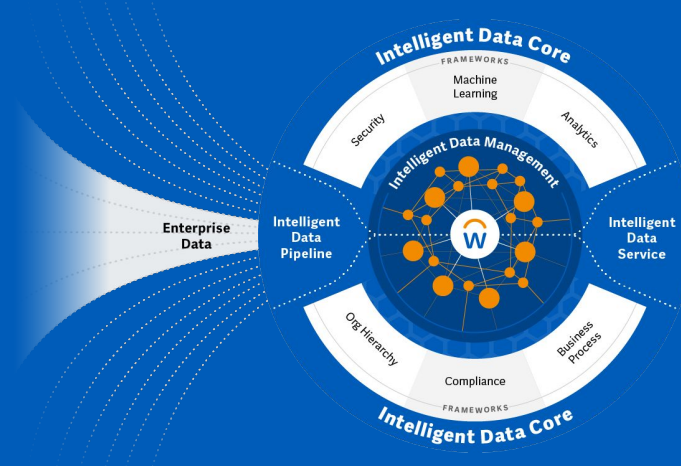
WORKDAY INTELLIGENT DATA CORE

Disconnected and Disparate Environment



- Multiple data sources require significant manual resources to bring different data types together
- Complex process to create accounting from operational data and doesn't support drill back to details
- Limited confidence in data quality results in multiple siloes of "truth"

Enterprise Data Hub for Finance & HCM



- Blend high volume operational, workforce, and financial data to create an enterprise data hub for finance
- Seamlessly create accounting from operational data while maintaining a connection to source transaction details
- Connect and secure all critical business data creating a single source of truth

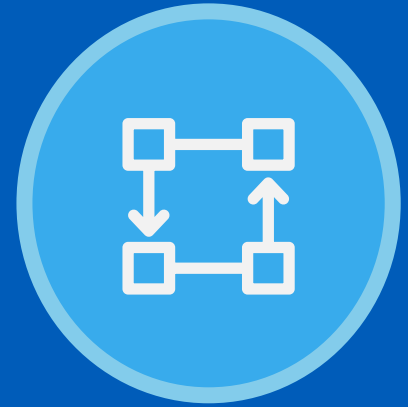
Workday Designed for Finance



Financial Analytics
Platform

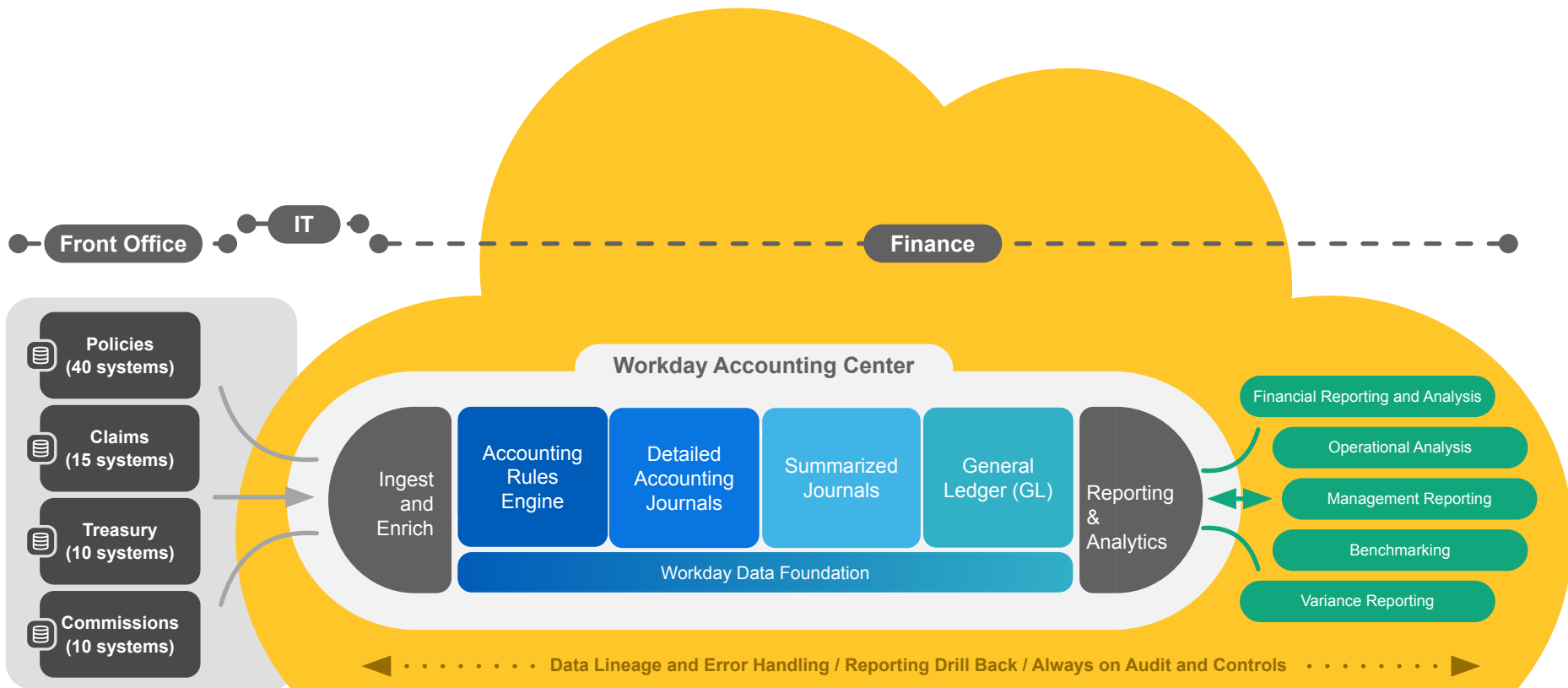


Accounting rules
designed for the user



Rich dimensionality with
data lineage and audit

Workday Accounting Centre



Q&A

The background of the slide is a solid orange color. On the right side, there are three large, overlapping circles in shades of orange and yellow, creating a modern, abstract design.

Thank you

