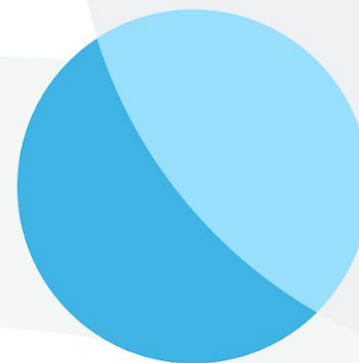


# Workday Live

at Workday Elevate

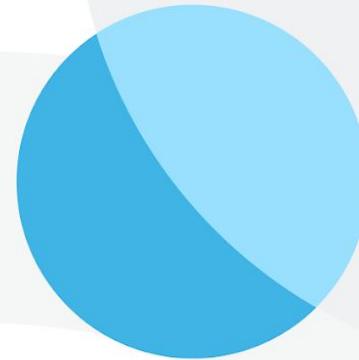
**London**  
133 Houndsditch,  
Liverpool Street,

24 May 2023



**Help your  
workforce flex  
with the future**

  
workday®





Dan Fernée

Solution Consultant



Michal Bielczynski

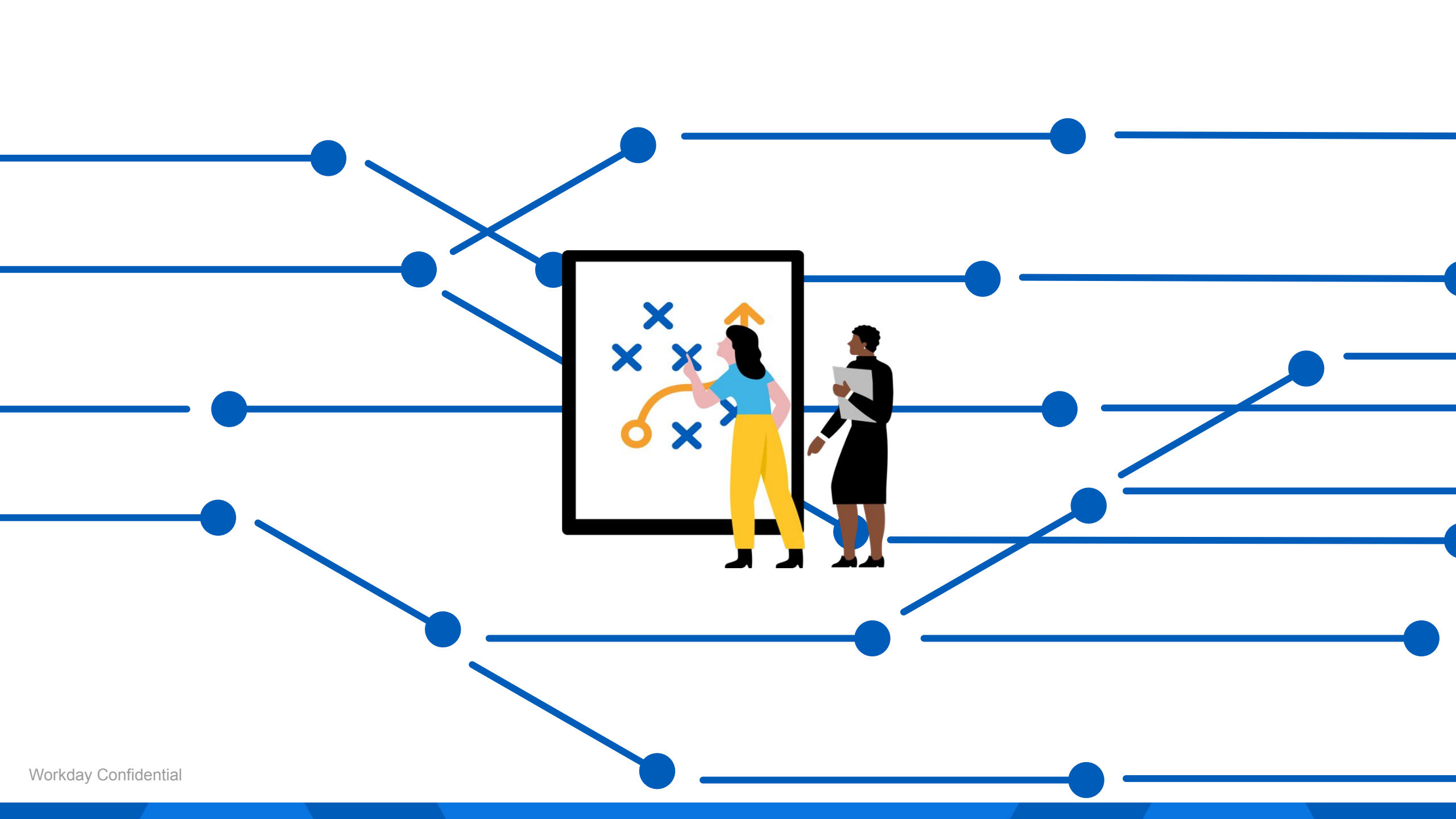
Implementation Strategy  
Director

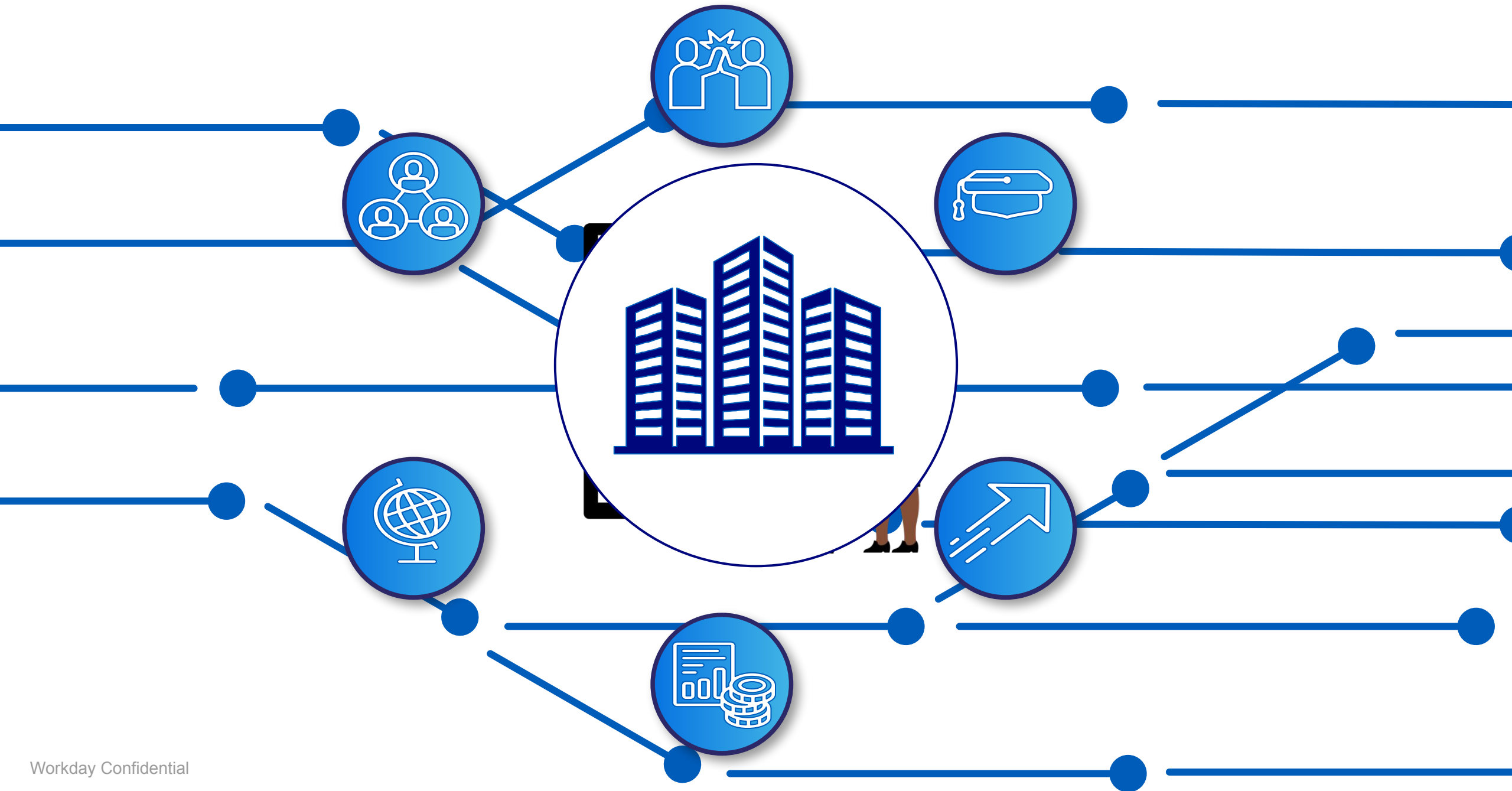
# Safe Harbor Statement

This presentation may contain forward-looking statements for which there are risks, uncertainties, and assumptions. Forward-looking statements may include any statements regarding strategies or plans for future operations; any statements concerning new features, enhancements or upgrades to our existing applications or plans for future applications; any projections of revenues, gross margins, earnings, or other financial items; and any statements of expectation or belief. Forward-looking statements are based only on currently available information and our current beliefs, expectations, and assumptions regarding the future of our business, future plans and strategies, projections, anticipated events and trends, the economy, and other future conditions. Because forward-looking statements relate to the future, they are subject to inherent uncertainties, risks, and changes in circumstances that are difficult to predict and many of which are outside of our control. Our actual results and financial condition may differ materially from those indicated in the forward-looking statements, and therefore you should not rely on any forward-looking statements that we may make. Further information on risks that could affect Workday's results is included in our filings with the Securities and Exchange Commission which are available on the Workday investor relations webpage: [www.workday.com/company/investor\\_relations.php](http://www.workday.com/company/investor_relations.php)

Workday assumes no obligation for, and does not intend to update, any forward-looking statements. Any unreleased services, features, functionality or enhancements referenced in any Workday document, roadmap, blog, our website, press release or public statement that are not currently available are subject to change at Workday's discretion and may not be delivered as planned or at all.

Customers who purchase Workday services should make their purchase decisions based upon services, features, and functions that are currently available.







**Strategic Targets**



**Powerful Modelling**



**Efficient Execution**



# Myth 1

I need to have all/many areas of Workday HR implemented before I can do Workforce Planning







# Myth 2

I can't do Workforce Planning:

- before setting up an analytical foundation first
- before loading all my Payroll / operational data into Prism
- focusing on a Strategic long range plan before Headcount & Cost Planning



# Baseline

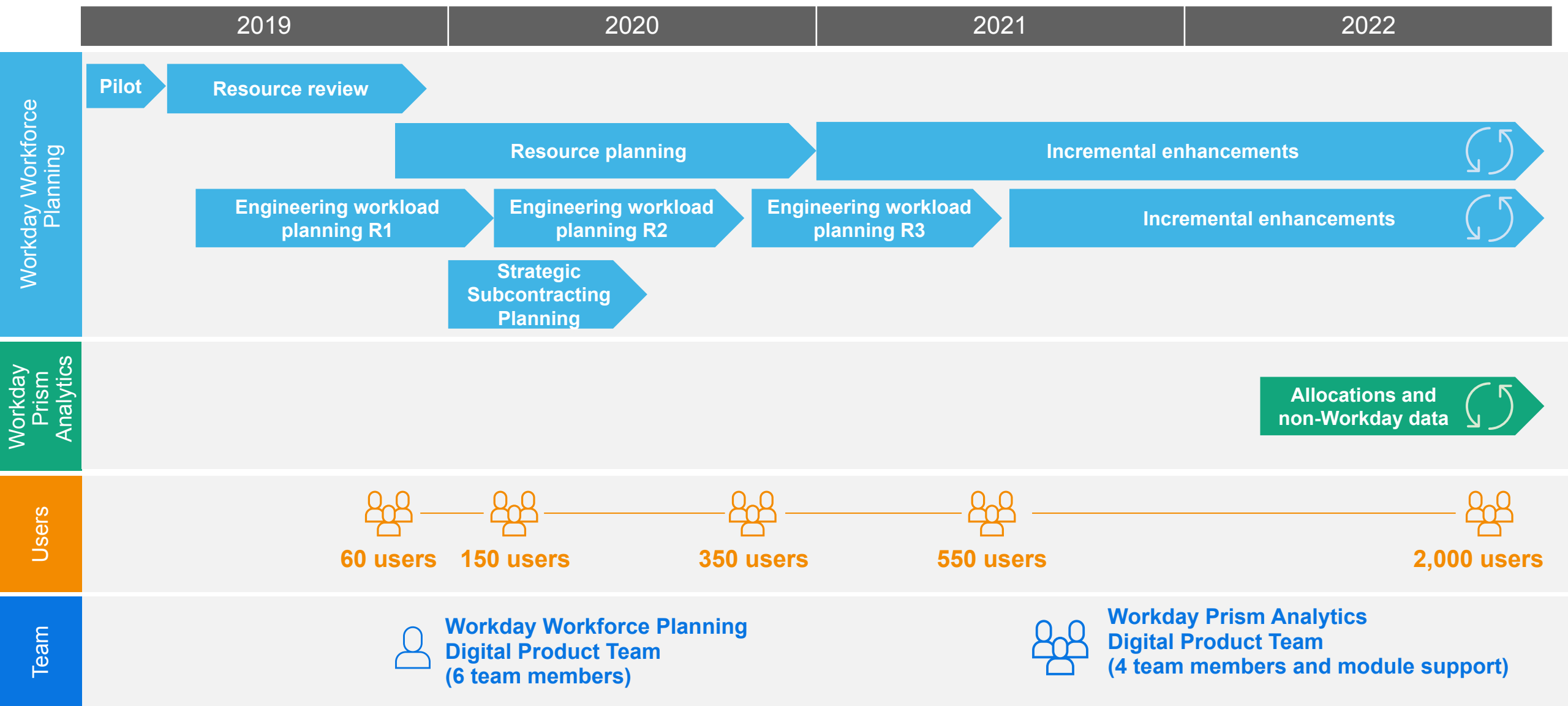
- Use a reliable data foundation
- Launch first use cases
- Deliver insights and plans with greater agility
- Prioritise user adoption and enablement



## Planning and Analytics 1st Use Case Examples

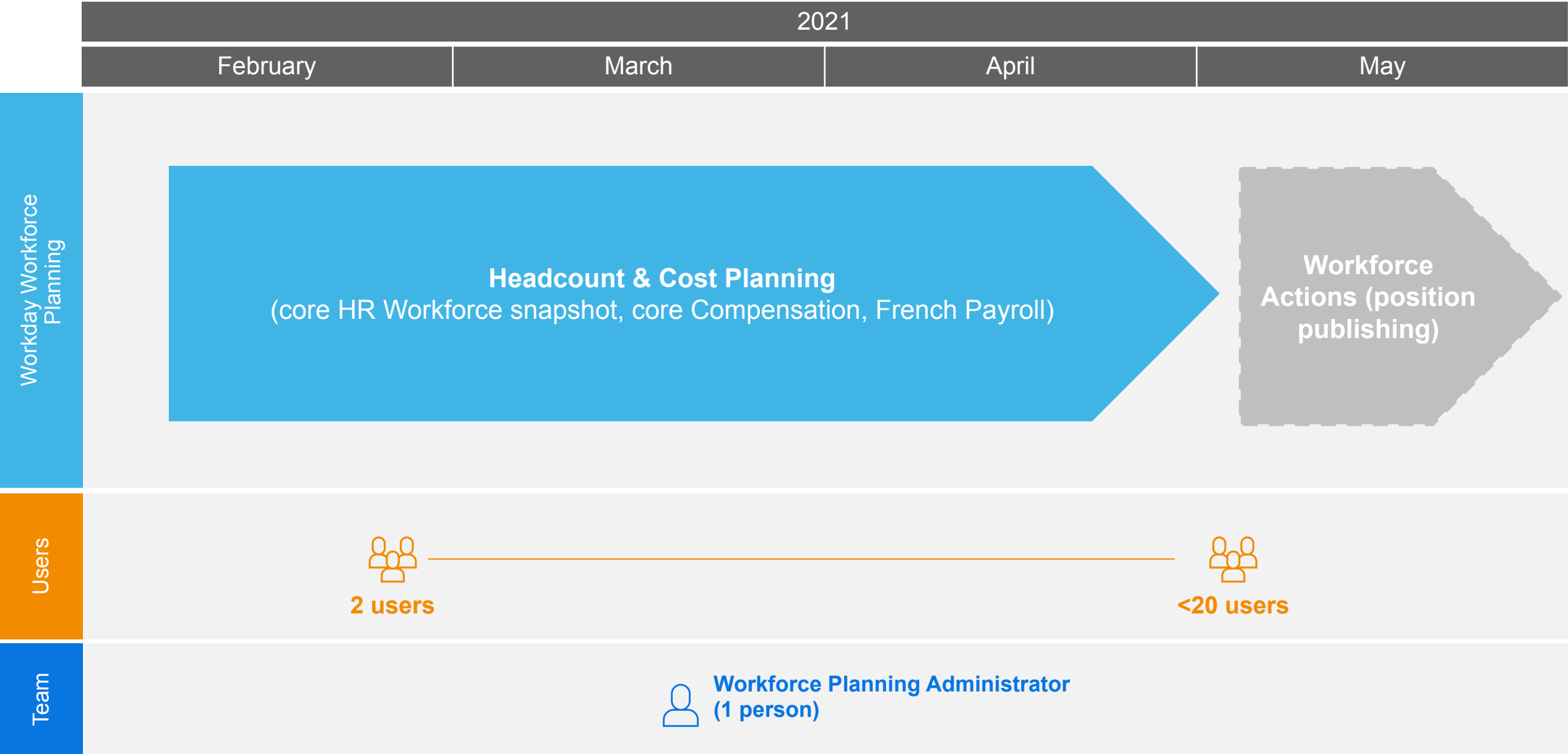


# Iterative Deployment Timeline



# Deployment Timeline

Investment Management Company



# Myth 3

I can't do Workforce Planning  
without a mature Workforce  
Planning function in my  
organisation



# Baseline

- Use a reliable data foundation
- Launch first use cases
- Deliver insights and plans with greater agility
- Prioritise user adoption and enablement



## Things to Consider

---

- 1. **Foundation:** Accelerators, solutions
- 1. **Organisational & functional scope:** Can be adjusted and extended over time
- 1. **User Experience:** A connected platform

**Q&A**

The background of the slide is a solid orange color. On the right side, there are three large, overlapping circles. The top circle is a bright yellow. The two circles below it are a lighter shade of orange. They overlap in a way that creates a complex, organic shape on the right side of the slide.



# Thank you

