



Workday Launch

The fastest route to getting your organization live on Workday.

By taking a preconfigured approach that's based on our successful past deployments, Workday Launch can get you up and running in a predictable timeframe while limiting risk. And with a customer satisfaction rating of over 95 percent, you can rest easy knowing we'll deliver as promised now and into the future.

Workday Launch highlights:

- **Feature-rich packages based on what's commonly deployed.** Each package includes the critical functionality our customers typically deploy to ensure success with Workday. As your business evolves, you can adopt more.
- **Preconfigured tenant that gives you a head start.** Based on leading practice configurations for all the areas defined in the packages, you can see your data in action and make better decisions during deployment.
- **Flexible and simplified experience throughout.** Choose the package, add-on, and integration requirements you need. We've also streamlined the deployment process to minimize cycles and required resources.
- **Resources that get you ready for go-live and beyond.** Use and administer Workday with confidence as your company changes and grows.

Approach overview

To start, Workday or your trusted partner guides you through a discovery process to understand your needs and content. Our deployment methodology guarantees a consistent approach and easy communication within the ecosystem.

We then present you with a preconfigured tenant based on what we learned from the discovery process and best practices. This removes potentially costly guesswork that comes with starting from scratch and accelerates planning.

Since we preload your data into the tenant, you can see your data in action and make critical decisions with confidence from the start, limiting your risk. You can then expand and refine the preconfigured prototype to ensure a perfect match.

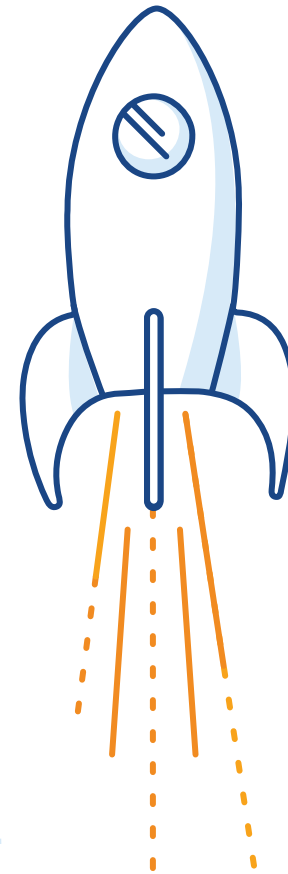
Flexible, feature-rich packages.

We intentionally designed the Workday Launch packages with the critical functionality our customers typically deploy. You can expand Workday with add-ons or integrations to meet the needs of your organization. Packages vary by region and industry. Please reach out to your Workday sales representative to learn more.

Start strong and realize continuous value.

Once in production, your teams can focus on mastering Workday essentials by participating in [Workday Explore](#)—a unique, collaborative journey you take with customers from organizations similar to yours. Over time, you'll be able to adopt new Workday innovation to match the changing needs of your business.

Throughout your life in production, Workday provides resources to ensure you maximize your investment, including customer success, enablement, training, and support. For more information, visit Services on workday.com.



+1-925-951-9000 | +1-877-WORKDAY (+1-877-967-5329) | Fax: +1-925-951-9001 | workday.com

©2020. Workday, Inc. All rights reserved. Workday and the Workday logo are registered trademarks of Workday, Inc. All other brand and product names are trademarks or registered trademarks of their respective holders.
[ov-serv-workday-launch.pdf](#)